

F
319
.S3W9



Class _____

Book _____

COPYRIGHT DEPOSIT



3314

VIEWS OF **SANFORD** DRAWN BY H.S. WYLLIE

ORANGE THE GATE CITY OF SOUTH FLORIDA COUNTY



RES.
YOUT
APR 15 1891
12771 W
WASHINGTON

View West from fire tower



F319
5344

SANFORD,

The Gate City of South Florida.

FEBRUARY, 1891.

City Officers—*Mayor*, Dr. J. J. HARRIS; *Clerk*, W. N. LEFFLER; *Treasurer*, SETH WOODRUFF; *Physician*, Dr. H. F. CALDWELL; *Marshal*, J. KILLABREW.

Aldermen—J. B. RANDALL (Chairman), M. H. BOWLER, H. M. PAPWORTH, JOHN SMITH, M. T. WOOD, J. M. PARHAM, O. S. TARVER.

Situation—On Lake Monroe, at head of the St. John's River navigation.

Founded—The Post Office was established and the Sanford House built in 1870.

Population—About 3,000.

Public Health—In 1890, the mortality was about eight per thousand.

Railroads—There are five which terminate in Sanford, and there is communication to all points of the State.

Steamers—Three in regular communication with the North.

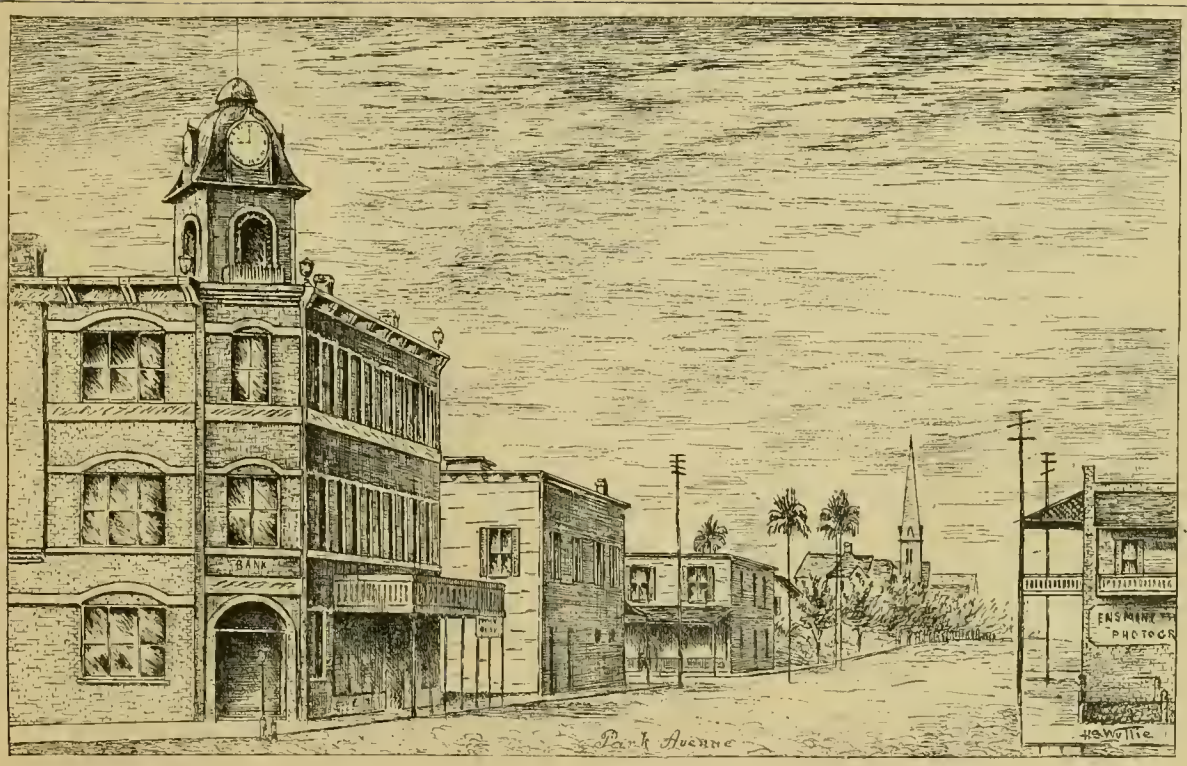
Traffic—Sanford is the receiving and distributing point of South Florida. At time of writing, there are from ten to twenty cars of phosphates and twenty to forty cars of oranges and fruit shipped daily. There is direct communication by water with New York, Philadelphia and other Northern ports. The *express business* amounts to about \$7,000 per month. *Postal business*, yearly receipts are \$7,000; last year showed an increase of \$1,000 over previous year.

Public Institutions—Schools. *Churches*: Episcopal, Catholic, Presbyterian, Baptist and Methodist, all under regular pastors. A company of Rifles. Fire department, which has reading rooms, library and gymnasium. Hotels and boarding establishments are numerous.

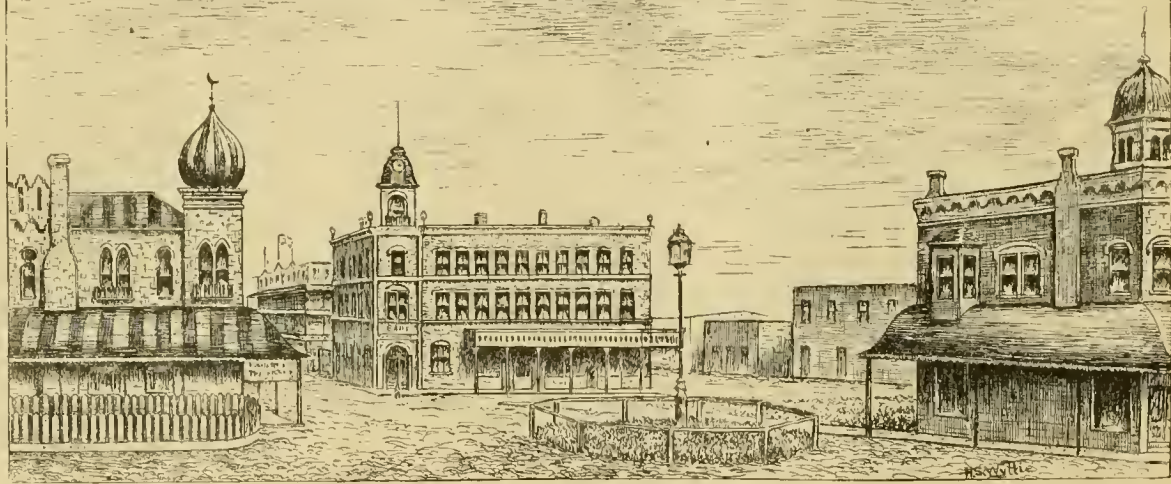
Water—The supply is brought from a clear-water lake, some three miles distant, and is excellent. Sulphur springs are numerous, and are largely utilized, there being five public and many private artesian wells sunk, varying in depth from 75 to 150 feet, with pressure from 5 to 25 feet.

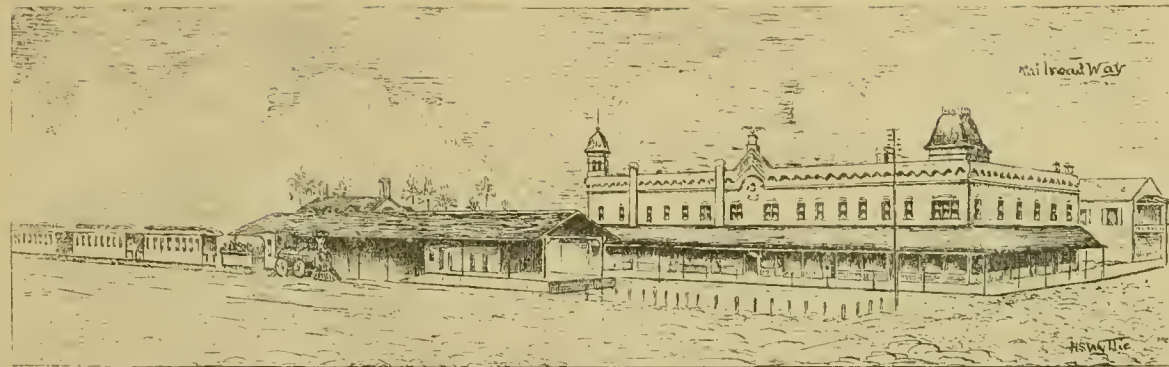
Recent Improvements—In the last six months four large brick blocks, and as many large frame houses, have been built, while the number of new residences also erected in that time has been considerable.

COPYRIGHT, 1891, BY
H. S. WYLLIE, SANFORD, FLA.



Commercial St.
from
The Union Depot

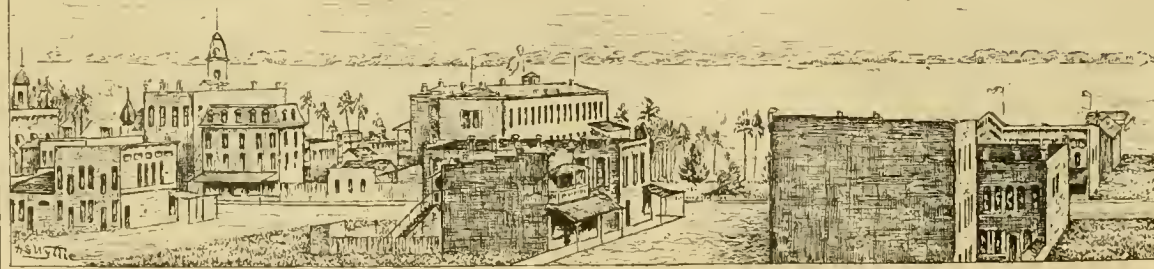




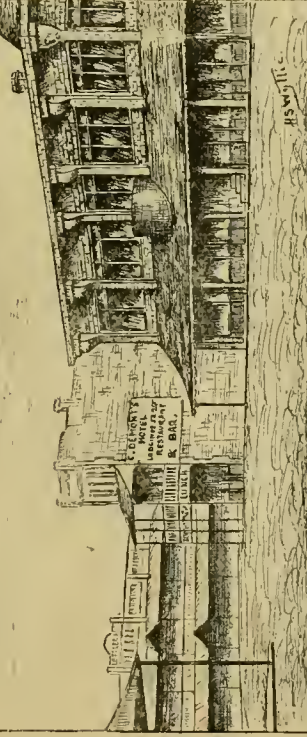
View East from Fire Tower



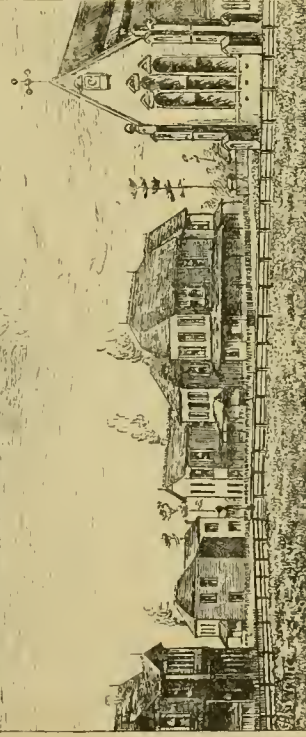
View North from Fire Tower



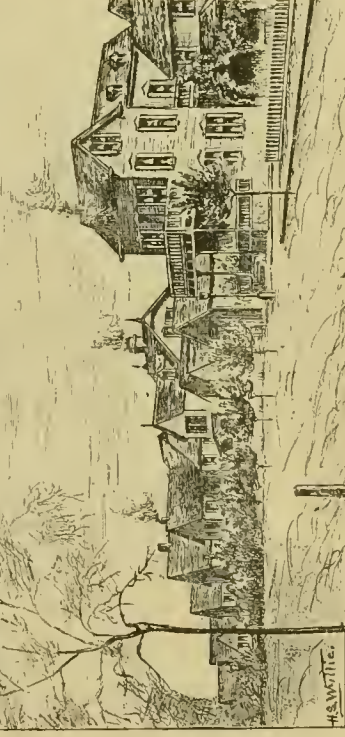
View East End of
Central Street



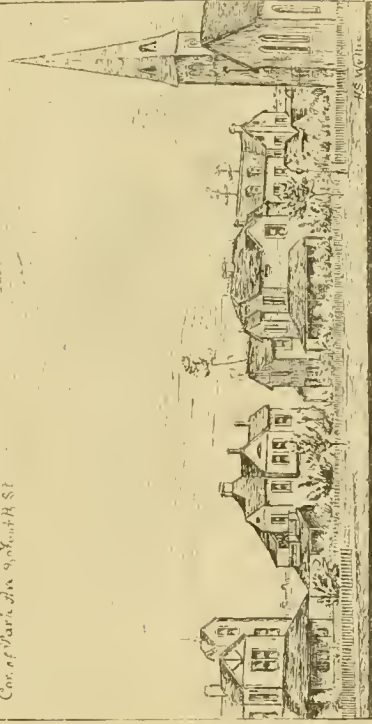
Corner of Oak Ave. & Fifth St.



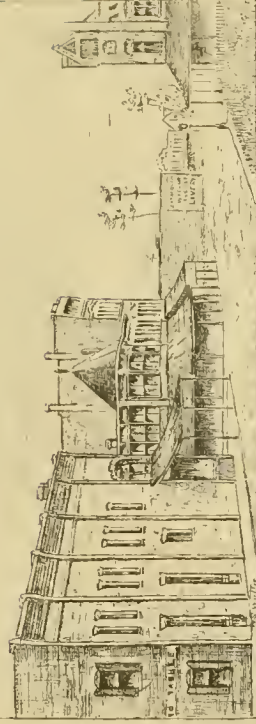
Corner of Third St. & Washington St.



Cor. of Park Ave. & North St.



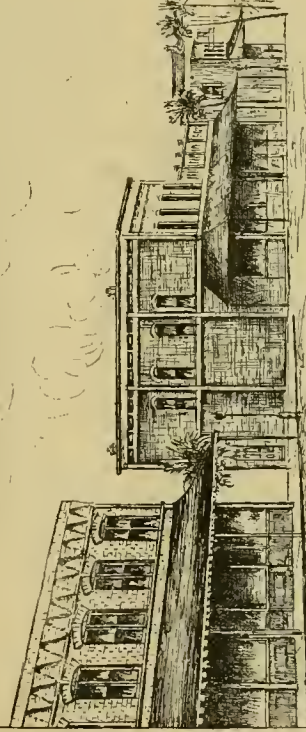
H.S. McCLURE



Sanford Ave.
corner of North St.

H.S. McCLURE

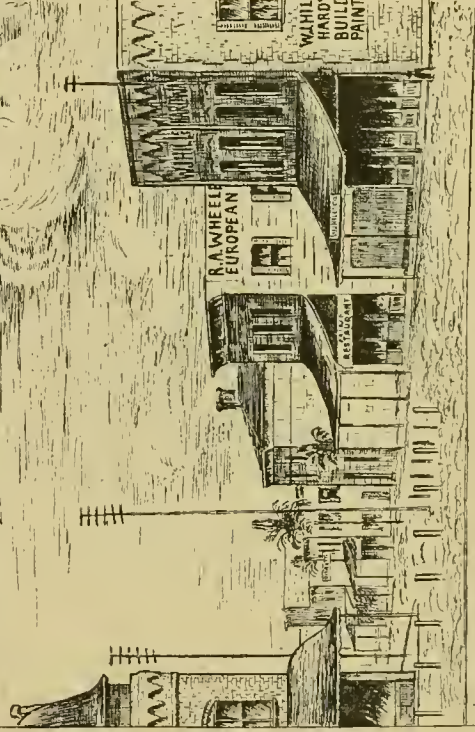
View on Olin St.



H. S. W. H. Co.

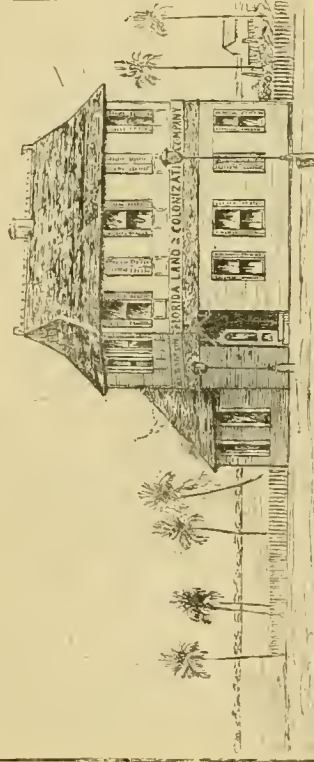
FIRBY STREET

Looking East

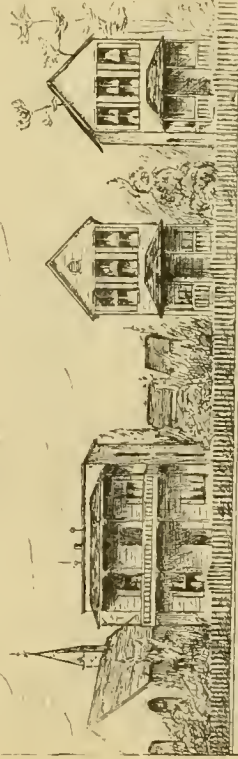


H. S. W. H. Co.

View on Commercial St.



Cor. Park Ave. & Third St.

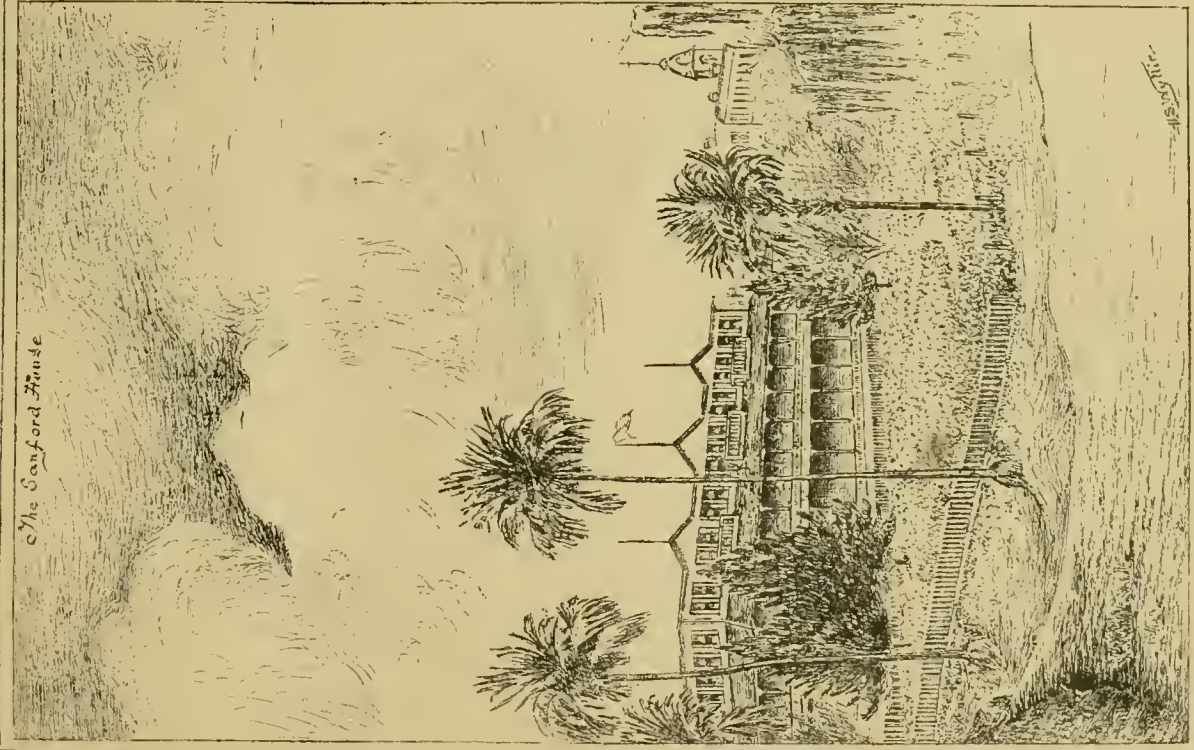


H.S. White.

View on Oak Ave.



The Sanford House



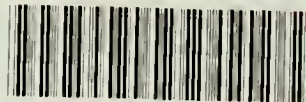
Wm. H. S. 1850

$\frac{1}{3}$

$\frac{1}{2}$ 7 30
5 10 12.

$\frac{1}{2}$
Ball

LIBRARY OF CONGRESS



0 014 541 395 3

